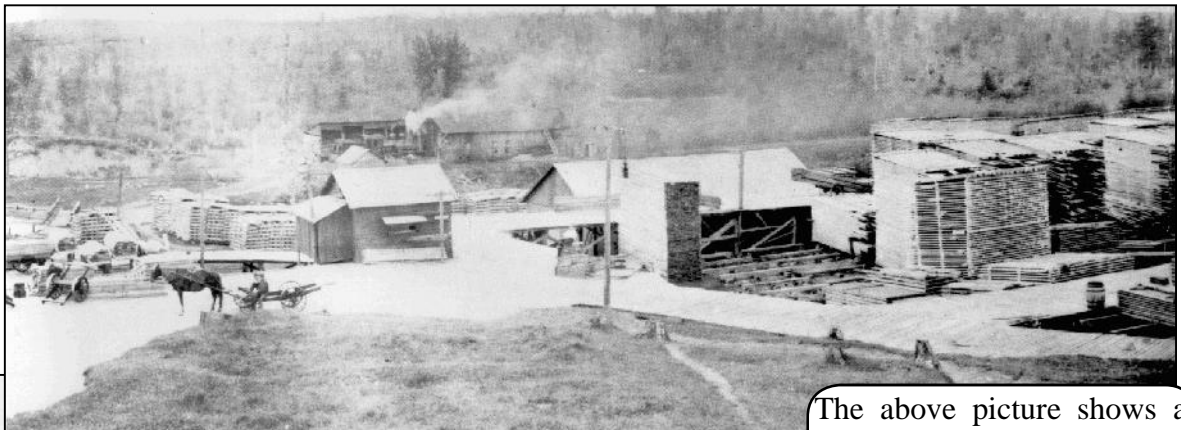



Mill/Factory Lumber Buggy Wagon

Lumber Buggy Wagon Plan-Set details consists of:

- Assembly Drawing
- Brass Details
- Construction Instructions
- Double Tree
- Lumber Buggy Information
- Material List
- Running Gear
- 3-D Renderings
- Wheel Fixture (7/8 scale)
- Wheel Construction (7/8 scale)
- Wood Details

Lumber Buggy. The name “buggy” as used here is a Sawmill term. This term was used at saw mills, lumber yards, woodworking plants and general farm use. These wagons carried their load and balanced it over the rear wheels making them somewhat shorter than other types of wagons. They were classified as heavy springless wagons. Capacity of the one shown on these plan-sheets would have been three tons and constructed of Hickory wood. Because of the many places where such wagons were used, they continued in use many years longer than most types of wagons.



The above picture shows a Lumber Buggy returning from the VCLCo Drying Yard.



This picture shows a load leaving the VCLCo Green Chain Sorting Deck to the Drying Yard.